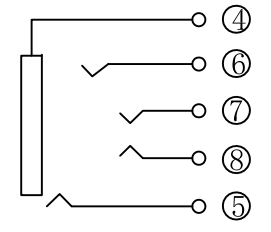
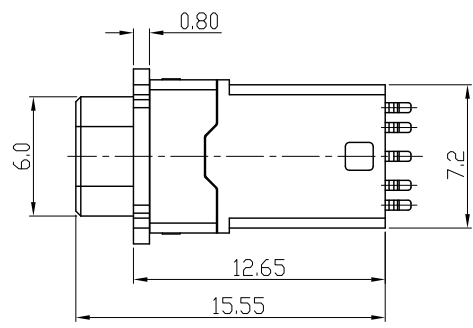
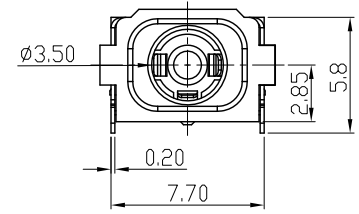
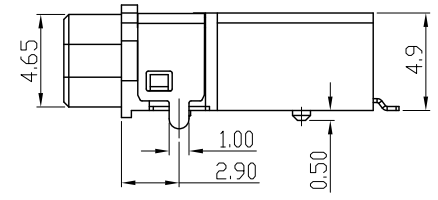
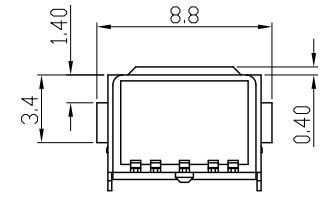
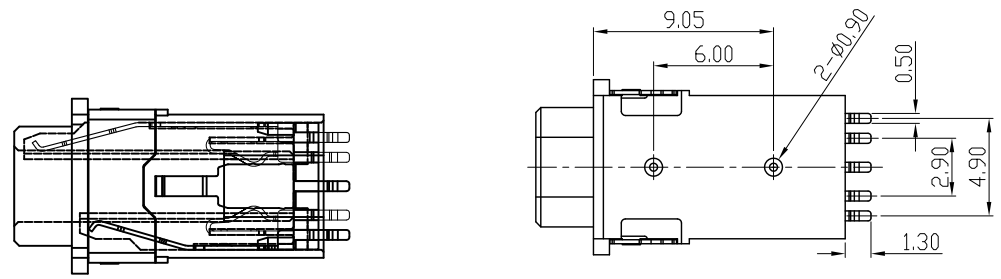
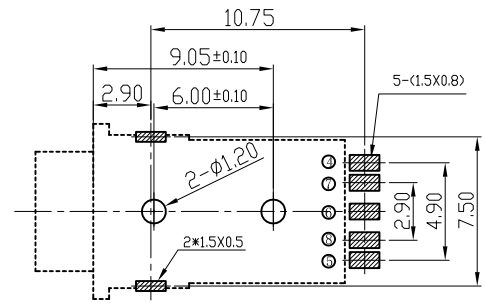



- 1. Material/Plated
 - 1.1 Housing: PPA, Black UL 94V-0.
 - 1.2 Terminal: Copper Alloy, Gold Plated
 - 1.3 Rubber Ring: Silica Gel
- 2. Electrical Performance
 - 2.1 Rated Voltage: 30V AC
 - 2.2 Rated Current: 0.5A
 - 2.3 Contact Resistance: 100mΩ Max.
 - 2.4 Insulation Resistance: 100MΩ Min.
 - 2.5 Dielectric Strength: 500V AC
- 3. Mechanical Performance
 - 3.1 Insertion Force: 3-30N
 - 3.2 Withdrawal Force: 3-30N
 - 3.3 Durability: 5000 Cycles
- 4. Operating Temperature: -25° C To +85° C
- 5. Dustproof and waterproof grade: IP67



Circuit Diagram



PCB LAYOUT

					DRAWN	Tom	2018-06-13	DIMENSION TOLERANCE X ±0.35 X.X ±0.25 X.XX ±0.15 X.XXX ±0.15 GENERAL ANGLE: ±3° UNIT: mm	 东莞市实邦电子有限公司 IDSTRB ELECTRONIC CO., LTD	
					CHECKED	Ango	2018-06-13			TITLE
					APPROVE	Kevin	2018-06-13		PART NO.	PJ-387
A	NEW RELEASE			Tom	2018-06-13	SCALE: N/A SHEET: 1 OF 1		DWG. NO.		
REV.	DESCRIPTION			ECN NO.	NAME	DATE				
REVISIONS										